



**OPEN
SCIENCE
HUB**

**EMPOWERING CITIZENS
THROUGH STEAM
EDUCATION WITH
OPEN SCHOOLING**

DELIVERABLE 6.2

OSHub.Network Digital Platform



Authors



Maria Vicente and Pedro Russo (ULEI)

Contributors



All Partners

Disclaimer

The information, documentation and figures in this deliverable are written by the OSHub project consortium under EC grant agreement No. 824581 and do not necessarily reflect the views of the European Commission. The European Commission is not liable for any use that may be made of the information contained herein.

All OSHub consortium members are also committed to publish accurate and up to date information and take the greatest care to do so. However, the consortium members cannot accept liability for any direct, indirect, special, consequential or other losses or damages of any kind arising out of the use of this information.

Reference

Please cite this work as:
OSHub Consortium, 2020. OSHub: D6.2 OSHub.Network Digital Platform,
Leiden University, Leiden

Copyright Notice



This work by Parties of the OSHub Consortium is licensed under a creative Commons Attribution 4.0 International Licence (<https://creativecommons.org/licenses/by/4.0/>)

Acknowledgement



OSHub has received funding from the European Union's Horizon 2020 Research and Innovation Programme under Grant Agreement No. 824581

Document Identification Sheet

Project Ref. No.	824581
Project acronym	OSHub
Project Full Name	Open Science Hub Network Empowering Citizens Through STEAM Education with Open Schooling
Document Name	OSHub.Network_D6.2OSHub.NetworkDigitalPlatform_20200630.pdf
Security	Public
Contractual Date of Delivery	Month 6, 31.03.2020
Actual Date of Delivery	Month 9, 30.06.2020
Type	Websites, patents, filling, etc.
Deliverable number	D6.2
Deliverable name	OSHub.Network Digital Platform
WP / Task	WP 6 Communication, Dissemination & Advocacy / Task 6.2 (ULEI)
Number of pages	26
Authors	Maria Vicente and Pedro Russo (ULEI)
Contributors	All Partners
Reviewers	All Partners
Project Officer	David Monteiro
Abstract	This document presents the structure and content of the OSHub.Network Digital Platform, in accordance with the Communication and Dissemination Plan defined in Deliverable 6.1.
Keywords	OSHub, Open Schooling, Communication, Dissemination, Digital platform

REVISION HISTORY

REVISION	DATE	AUTHOR	ORGANISATION	DESCRIPTION
0.1	25 March 2020	Maria Vicente and Pedro Russo	ULEI	Initial Draft
0.2	15 May 2020	All partners	All	Review
0.3	30 June 2020	Maria Vicente and Pedro Russo	ULEI	Final version

LIST OF ACRONYMS

ACRONYM	DEFINITION
API	Application Programming Interface
HO2020	Horizon 2020
OSHub	Open Science Hub
STEAM	Science, Technology, Engineering, Arts and Mathematics
TCD	Trinity College Dublin
ULEI	University of Leiden
WP	Work Package

EXECUTIVE SUMMARY

This document corresponds to Deliverable 6.2: OSHub.Network Digital Platform. The OSHub.Network Digital Platform aims at sharing the OSHub expertise, resources, and best practices with all OSHubs, their partners and the communities they serve, namely managing, sharing, distributing and disseminating information and news, open resources, open schooling projects of the OSHub.Network project, as well as initiatives and other relevant information for OSHubs and the wider Open Schooling community.

**The OSHub.Network Digital Platform will be available in 8 languages, corresponding to the language of the partner countries:
Dutch, English, Italian, French, Austrian, Czech, Portuguese, Greek.**

In this deliverable we describe the Structure and Content of the website according to the outlined objectives.

TABLE OF CONTENTS

	Revision History	4
	List of Acronyms	5
	Executive Summary	6
1.	Introduction	8
	1.1 Background: about OSHub.Network	8
	1.2 Objectives of the OSHub.Network Digital Platform	9
2.	The OSHub.Network Digital Platform	12
	2.1 Development and Management	12
	3.2 Structure and content	12
3.	Conclusion	24

1. INTRODUCTION

1.1 Background: about OSHub.Network

The Open Science Hub Network (OSHub.Network), a consortium of nine partners across Europe, engages schools and local stakeholders in research and innovation as a tool for sustainable community development.

More specifically, the OSHub.Network is establishing a European network of community hubs – OS Hubs, in communities that traditionally do not engage with research and innovation due to various barriers, geographical location, socio-economic status, or ethnic minority group background. OS Hubs inspire, empower and engage citizens – from school children to senior citizens – in STEAM (Science, Technology, Engineering, Arts and Mathematics) learning and research opportunities, grounded on collaboration with societal agents.

As such, local OS Hubs work as mediators in their local communities, positioning schools as active agents for collaboration between civil society, enterprises, research institutes, and families. This is performed by promoting an open schooling approach grounded in community-based participatory research practices: throughout this process, schools and communities identify local relevant challenges, which are then be transformed into relevant research and innovation projects, led by students and teachers, in collaboration with local stakeholders.

The OSHub.Network is developing a common methodological framework, that allows each OS Hub to identify and analyse local needs, issues, opportunities and relevant actors, in order to address socio-economic, geographical, gender equity issues, and untapped growth potential. Inspired by the “Mission-Oriented Research & Innovation in the European Union”¹ approach, developed by Mariana Mazzucato, OSHub.Network will define a set of Open Schooling Missions, aimed at addressing local relevant challenges linked to the Sustainable Development Goals. These Open Schooling Missions will then constitute the basis for the creation and development of the open schooling projects, enabling real collaboration across communities.

Importantly, to ensure diversity, inclusion and sustainability, in each OS Hub location, there will be a local management board with representatives from local stakeholder groups – schools (including students), families, research institutes and universities, enterprises, industry, media, local governments, civil society organizations and wider society – which will be involved in all key processes and decisions regarding local OS Hub programmes and initiatives.

1 Mariana Mazzucato (2018), Mission-Oriented Research and Innovation in the European Union – A problem solving approach to fuel innovation-led growth’, European Commission, Retrieved from: https://ec.europa.eu/info/sites/info/files/mazzucato_report_2018.pdf

By supporting local schools and communities with the tools and network to tackle relevant challenges, OSHub.Network aims to create local impact while simultaneously promoting an active global citizenship attitude, thus contributing to community development, innovation and well-being.

To encourage usage and maximise impact in Europe and beyond, all resources, products and solutions developed by OSHub.Network will be fully based on Open Standards, such as open education, open technology, open science, open hardware, open design and open architecture. Also, OSHub.Network will create an online platform to share OSHub expertise, resources, and best practices with all OSHubs, their partners and the communities they serve. To ensure the legacy and reach of the project, all OSHub.Network resources will also be shared on existing large online educational repositories, and relevant national networks and repositories.

Finally, OSHubs will develop a legacy and sustainability plan, and will work closely with local governments, to ensure that each local OSHub has the tools and resources to continue beyond the lifetime of the project, and that the Open Schooling approach is incorporated in the school vision and organizational structure.

By the end of the project, it is expected that the OSHub.Network will have impacted 25 000 students, 1 250 teachers and 4 000 members of the community, through involvement in more than 150 school-university-industry-civil society partnerships in open schooling projects and activities.

In the long-run, we envision OSHubs as education brokers in their local communities, supporting local school networks to incorporate Open Schooling in their vision and organizational structure, leading to sustainable quality of education. Most particularly, OSHubs will facilitate the bridge between the needs and realities of schools and their local context and resources, as well as brokering for implementing national/regional policies, passing along signals from schools when policies are failing and advocating for context-sensitive policies.

1.2 Objectives of the OSHub.Network Digital Platform

The OSHub.Network Digital Platform is part of the Communication and Dissemination Plan outlined in „Deliverable 6.1 Communication and Dissemination Strategy“, whose objectives are the following:

Communication objectives:

- To increase the understanding about the role of Open Schooling and building community partnerships – between schools, families, universities, research institutes, industry, enterprises, government, civil and wider society – in contributing to the development, innovation and well-being of local communities, by promoting a more scientifically interested and literate society while fostering responsible citizenship
- To clearly communicate the role of local OSHubs as mediators in local communities, positioning schools as active agents for collaboration between different societal actors, by promoting an open schooling approach grounded in community-based participatory research practices through STEAM learning opportunities
- To raise student awareness and interest in scientific careers
- To engage and support teachers and school heads in implementing Open Schooling initiatives in their teaching practices, leading to a change in the institutional culture of schools – to promote and increase the involvement of local actors in Open Schooling initiatives – to communicate the educational and societal relevance of the Open Schooling approach to policy-makers
- To promote sharing, networking and long-term partnerships within and between the communities where the OSHubs will be established, equalising educational opportunities regardless of geographic location or socio-economic background, via open standard materials and resources.

Dissemination objectives

- To build and run an effective and tailored communication and dissemination plan to engage the identified target groups and ensure the best impact of the project in each OSHub location and across the network
- To develop a comprehensive set of communications tools and materials to ensure an effective establishment of Open Schooling networks in each OSHub location and sharing across the network
- To communicate and disseminate the results within the project to identified target groups, through relevant dissemination channels, to ensure a successful positioning of the project, exposure and delivery of its results in each OSHub location and across the network – to create the foundations for a robust legacy and sustainability beyond the end of the project – to ensure good internal communication amongst partners, with regular updates on progress and achievements.

In particular, the OSHub.Network Digital Platform aims at sharing the OSHub expertise, resources, and best practices with all OSHubs, their partners and the communities they serve, namely managing, sharing, distributing and disseminating information and news, open resources, open schooling projects of the OSHub.Network project, as well as initiatives and other relevant information for OSHubs and the wider Open Schooling community.

Namely, the OSHub.Network Digital Platform has the following objectives, according to the different target publics:

Local OSHubs:

- To promote communication and collaboration amongst OSHub.Network partners by creating dedicated spaces for each local OSHub to post information about their teams and expertise, the OSHub Management Board (MB), the community challenges they will be tackling and the corresponding Open Schooling projects.
- To promote capacity building by making available the OSHub.Network Blueprint, which will include guides for full development and implementation of the OSHub.Network model through local OSHubs spaces, including technical details, activities, facilitation guidelines, operational plans, professional development guides for educators, academic research, business plan template and gender equity recommendations for OSHub.Network managers. The OSHub.Network Blueprint will be fully based on Open Standards.

Open Schooling international community:

- To promote communication and collaboration between the OSHub.Network and Open Schooling projects by sharing best practices and resources, such as webinars/videos on Open Schooling best practices, open source projects, news.
- To promote capacity building by making available the OSHub.Network Blueprint.

Partners: schools, families, research institutes and universities, enterprises, industry, media, local governments, civil society organizations and wider society:

- To promote the partners that will be part of the local OSHub MBs, and their work, by having a dedicated space for them
- To communicate the engagement and involvement of the different community stakeholders in the Open Schooling projects
- To promote communication and collaboration between partners across different countries through sharing of the Open Schooling projects, which will be fully based on Open Standards

The OSHub.Network Digital Platform will be available in 8 languages, corresponding to the language of the partner countries: Dutch, English, Italian, French, Austrian, Czech, Portuguese, Greek.

The website will be available after the project lifespan and relevant content (toolkit, documentation material) will be made available to archives and repositories (e.g. Ars Electronica Archive, Scientix, etc.).

2. THE OSHUB. NETWORK DIGITAL PLATFORM

2.1 Development and Management

The OSHub.Network Digital Platform – oshub.network – , has been developed and managed by ULEI, based on an open source web framework.

This framework will allow the authors to update the content of the resources and automatically produce the necessary output files in the necessary formats (example: html, print ready PDFs) and also source files and doc files for translations). This will also allow a direct update of the activities through an API (application programming interface) to the generic resources databases (such as OERCommons, Scientix, TES, ISSU, Slideshare).

2.2 Structure and content

Figure 1 shows the top portion of the OSHub.Network landing page.

On the top-right region there is a navigation menu that is common for all pages, and that indicates the main sections of the website, which we describe below in more detail.

[Home](#) [Local OSHubs](#) [OSHub Projects](#) [OSHub Blueprint](#) [OSHub Partners](#) [Open Schooling Community](#) [Get Involved](#) [Eng](#)



SCHOOL-LED COMMUNITY
DEVELOPMENT THROUGH
RESEARCH AND INNOVATION



» « « «

Figure 1: OSHub.Network website landing page

2.2.1 Project

In the “Project” page (Figure 2), we present the main pillars of the OSHub.Network project. By clicking on the “read more” (Figure 3), the visitors will be able to read a more detailed description of the project.

OSHUB.NETWORK PROJECT

[read more](#)

OSHUBS AS SCHOOL-DRIVEN SCIENCE SHOPS

The Open Science Hub Network (OSHub.Network) engages and supports schools and local stakeholders in research and innovation, as a tool for tackling local relevant challenges and contributing to sustainable community development.

Local OSHubs work as mediators in each local community, positioning schools as active agents for collaboration between families, universities, research institutes, industry, enterprises, media, local governments, civil society organizations, and wider society, by engaging in real-life projects that meet societal needs.



SCHOOLS AS COLLABORATION HUBS FOR COMMUNITY DEVELOPMENT

Across the different OSHub locations, schools and their communities identify local relevant challenges, linked to the Sustainable Development Goals, which are then combined in shared global Open Schooling Missions, enabling real collaboration across communities.

In each OSHub location, Open Schooling Missions are transformed into relevant research and innovation projects, led by students and teachers, in collaboration with local stakeholders.



OPEN SCHOOLING MISSION WITH LOCAL IMPACT

By supporting local schools and communities with the tools and network to tackle relevant challenges, OSHub.Network aims to create local impact while simultaneously promoting an active global citizenship attitude, thus contributing to community development, innovation and well-being.



Figure 2: OSHub.Network website “Project” page



SCHOOL-LED COMMUNITY DEVELOPMENT THROUGH RESEARCH AND INNOVATION

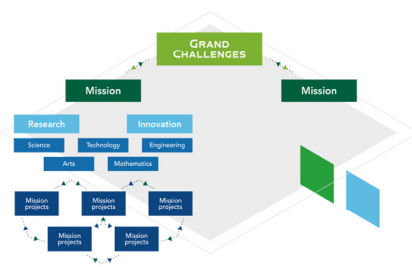
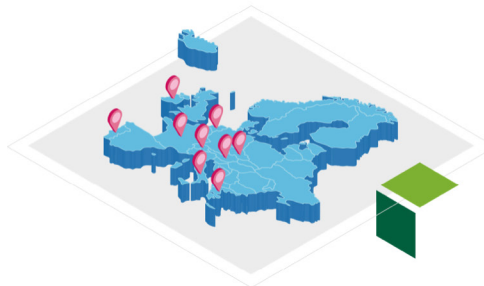


The pace of change in society - from technological innovation to global interconnectedness - is rapidly changing and has been fundamentally altering the way people live, work and learn. Moreover, the societal challenges of the 21st century render urgent the need to integrate the knowledge and expertise of different societal actors, and to develop meaningful and inclusive ways of connecting schools, universities, enterprises, civil society, governments and local communities using more innovative, efficient and open methodologies.

OPEN SCIENCE HUB NETWORK - BRIDGING BORDERS AND BARRIERS ACROSS EUROPE

The Open Science Hub Network (OSHub.Network), a consortium of nine partners across Europe, engages schools and local stakeholders in STEAM (Science, Technology, Engineering, Arts and Mathematics) research and innovation, as a tool for tackling local relevant challenges and contributing to sustainable community development.

More specifically, the OSHub.Network is establishing a European network of community hubs - OSHubs, in communities that traditionally do not engage with research and innovation due to various barriers, geographical location, socio-economic status, or ethnic minority group background.



GLOBAL OPEN SCHOOLING MISSIONS WITH LOCAL IMPACT

The OSHub.Network is developing a common methodological framework, grounded in open schooling and community-based participatory research practices. Throughout this process OSHubs, schools and local communities identify and analyse local needs and opportunities, in order to address environmental, socio-economic, equity issues and untapped growth potential, through relevant research and innovation projects, led by students and teachers, in collaboration with local stakeholders.

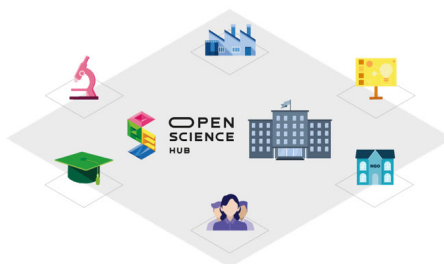
Inspired by the "Mission-Oriented Research & Innovation in the European Union" approach, developed by Mariana Mazzucato, OSHub.Network is defining a set of Open Schooling Missions, aimed at addressing local relevant challenges linked to the Sustainable Development Goals. These Open Schooling Missions constitute the basis for the creation and development of the open schooling projects, enabling real collaboration across communities.

HOW DO OSHUBS SUPPORT LOCAL SCHOOLS?

Local OSHubs work as mediators in each local community, positioning schools as active agents for collaboration between families, universities, research institutes, industry, enterprises, media, local governments, civil society organizations, and wider society, by engaging in real-life projects that meet societal needs.

As such, OSHubs support schools identifying specific needs and implementing the different phases of the Open Schooling process, namely through the co-development and implementation of research and innovation projects and activities, facilitation of continuing professional development programmes for teachers and school leaders, and by assessing which practices work and under what circumstances.

Moreover, OSHubs foster the development and sustaining of local networks and strategies for schools and community stakeholders to exchange their knowledge and experiences, and to collaborate on joint projects at different levels, both at the national and European levels.



INCLUSION AND ACCESSIBILITY THROUGH OPEN STANDARDS

To encourage usage and maximise impact in Europe and beyond, all resources, products and solutions developed by the OSHub.Network are fully based on Open Standards, such as open education, open science, open technology, open science, open software, open hardware, open architecture. To ensure the legacy and reach of the project amongst all OSHubs, their partners and the communities they serve, all OSHub.Network resources and best-practices will be shared in a dedicated section of this website - **OSHub Blueprint** - and on existing large online educational repositories, and relevant national networks and repositories.

LEGACY AND SUSTAINABILITY

To ensure diversity, inclusion and sustainability, in each OSHub location, there is a local management board - OSHubMB - with representatives from local stakeholder groups - schools (including students), families, research institutes and universities, enterprises, industry, media, local governments, civil society organizations and wider society - which is involved in all key processes and decisions regarding local OSHub programmes and initiatives. OSHubs are developing a legacy and sustainability plan, and will work closely with local governments, to ensure that each local OSHub has the tools and resources to continue beyond the lifetime of the project, and that the Open Schooling approach is incorporated in the school vision and organizational structure.



By the end of the project, it is expected that the OSHub network will have impacted 25 000 students, 1 250 teachers and 4 000 members of the community, through involvement in more than 150 school-university-industry-civil society partnerships in open schooling projects and activities.

In the long-run, we envision OSHubs as education brokers in their local communities, supporting local school networks to incorporate Open Schooling in their vision and organizational structure, leading to sustainable quality of education. Most particularly, OSHubs will facilitate the bridge between the needs and realities of schools and their local context and resources, as well as brokering for implementing national/regional policies, passing along signals from schools when policies are failing and advocating for context-sensitive policies.

Figure 3: OSHub.Network website "Read More" subpage

2.2.2 Local OS Hubs

The “Local OS Hubs” page (Figure 4) will be the space dedicated to the different local OS Hubs.

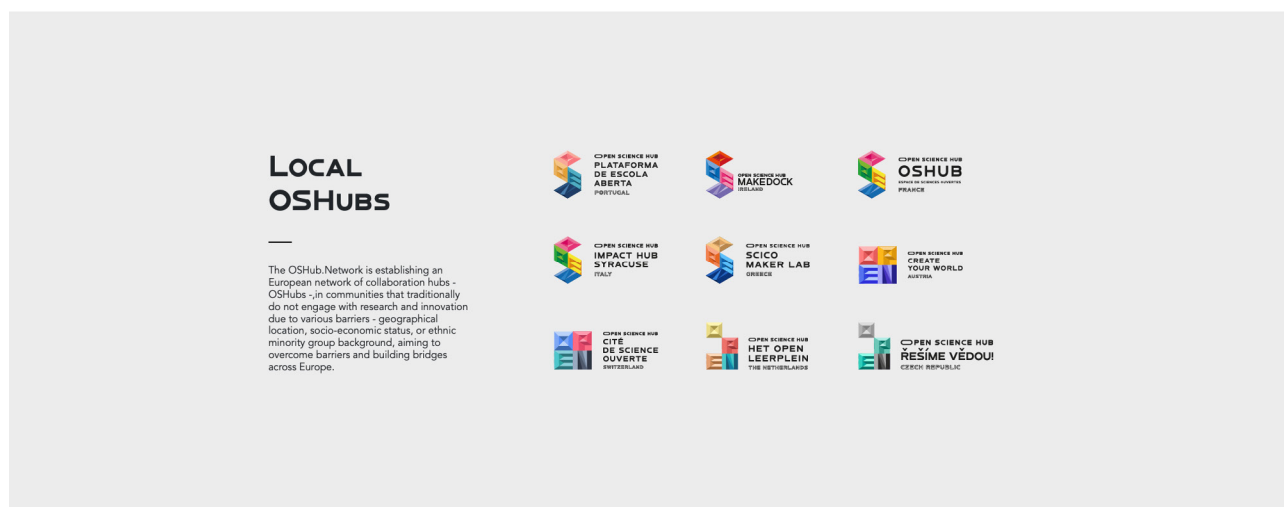


Figure 4: OS Hub Network website “Local OS Hubs” page

Regarding the national logos, each local OS Hub will have a customized version, where they will be able to create, at their own will, their configuration of the “O”, “P”, “E”, “N” elements, and have a dedicated colour palette.

Each of the different OS Hub icons will lead to a different subpage, which will be managed by the corresponding project partners, and will be organized as follows – please see Figure 5 for a template a Local OS Hub subpage:

- **Team:** this will provide information about the people behind the local OS Hubs, in order to provide a more humane and personal touch – who they are, and their motivations and expertise on Open Schooling.
- **Social and Educational Landscape:** in this subpage, each OS Hub will include information about their location and the respective assessment of the socio-economic and educational landscape.
- **Management Board:** who are the entities/people involved and their contribution to the OS Hub Network project.
- **Challenge and Mission:** here each local OS Hub will describe the local relevant challenge and the corresponding mission, that were selected and defined together with their local partners.
- **Open Schooling Projects:** this will have information, together with the corresponding open source resources, about the open schooling projects that will be developed in collaboration with the local partners, aimed at tackling the challenge and mission outlined before.



UNIVERSIDADE
DE CASTELHO
DE BRANCO

**SCHOOL-LED COMMUNITY
DEVELOPMENT THROUGH
RESEARCH AND INNOVATION**



Open Schooling is...

co-creating meaningful learning experiences between schools and their local communities, by developing projects focussed on locally relevant challenges, aligned with the school's needs and context.

We want to impact...

the school community, namely by collaborating with teachers, to embed open schooling and research & innovation practices in their daily-life, stimulating student's active citizenship and school performance.

Our assets are

Citizen-science

Makerspace
(with Precious
Plastic equipment)

STEM
workshops

Co-creation
and stakeholder
participation

Teacher training

TEAM



Ana Faustino
Project Manager

ana.faustino@plataforma.edu.pt



Ana Peso
Project Manager

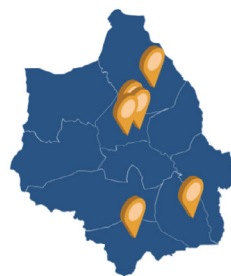
ana.peso@plataforma.edu.pt



Paulo Jorge Lourenço
Educational Coordinator

paulo@plataforma.edu.pt

PARTNER SCHOOLS



MAPA DA UNICEL

LOCAL MANAGEMENT BOARD

The OSHub Management Board consists of a group of representatives from different local stakeholder groups, – schools, families, research institutes, enterprises, industry, civil and wider society - that will be involved in all key processes and decisions of the local OSHubs.



Gabinete de Ambiente
do Município de Figueira
de Castelo Rodrigo
Environment Office - Municipality



Gabinete de Educação
do Município de Figueira
de Castelo Rodrigo
Education Office - Municipality



Serviços de Psicologia
do Agrupamento de Escolas
de Figueira de Castelo Rodrigo
Psychology Office - School



Associação Transmância
e Natureza
NGO



Universidade
de Aveiro
University



Associação de Pais de Figueira
de Castelo Rodrigo
Parents' Association



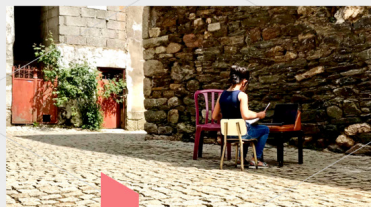
Agrupamento de Escolas
de Figueira de Castelo Rodrigo -
AEFCR
School Group



Associação de
Estudantes de Figueira
de Castelo Rodrigo
Students Association

CHALLENGE AND MISSION

OSHub-PT is located in a low-density territory in the border between Portugal and Spain, traditionally with low access to science, technology and innovation, low collaboration between entities and reduced citizen participation in community challenges. In addition, the territory's wilderness faces several anthropogenic-driven threats, such as the quality of the Douro river due to tourism pressure. As such, we want to: reduce geographical isolation and increase student's global connectedness by fostering digital literacy skills; increase student's active citizenship while promoting teacher's autonomy on collaborative, participatory-based and research-driven educational approaches; and to involve the school community in improving the freshwater quality of the region.



OPEN SCHOOLING PROJECTS



ACTIVE CITIZENSHIP THROUGH OPEN SCHOOLING: A TEACHER CONTINUING TRAINING PROGRAM-BASED STRATEGY

With the goal of increasing student's active citizenship and promoting teacher's autonomy on Open Schooling practices, we have been co-developing and implementing, in partnership with the school group of Figueira de Castelo Rodrigo, a continuing training program for teachers, and respective manual, based on methodologies that promote co-creation and innovation, such as Design-thinking and Social Business Model Canvas. These resources, which are being implemented in the discipline of Citizenship and Development, provide guidance to students and teachers from the identification of local challenges to the design, implementation and communication of projects in collaboration with the local partners and community.

FOSTERING DIGITAL LITERACY TO OVERCOME PHYSICAL DISTANCE

The remote location of Figueira de Castelo Rodrigo potentiates several challenges for youngsters, namely related with the small number of local role models and the reduced student motivation and ambition regarding their learning and professional goals. With this project we want to counteract these trends through digital connectedness, and for that we are creating an academy aimed at fostering student digital literacy. As initial objectives we want to increase student's autonomy in the use of educational digital platforms, and to build digital-based mechanisms to reduce the physical distance between students and researchers / artists / entrepreneurs.



WORK TOWARDS HEALTHY RIVERS THROUGH COMMUNITY-BASED RESEARCH STRATEGIES

We want to fight for the quality of our river streams and to understand how it is impacted by human activities. For that, we partnered with the international citizen science project **Drinkable Rivers**, where schools and local inhabitants are actively involved in assessing the health status of the Douro river, by performing periodic analysis of several parameters, such as pH, phosphates, nitrates and hardness. Additionally, we are also collaborating with STEM teachers towards transforming pre-existing curricular activities into more research-driven experiments with strong links to the surrounding territory, thus providing more meaningful learning experiences.



Figure 5: OSHub.Network website "Local OSHub" template page

2.2.3 OSHub Blueprint

The “OSHub Blueprint” page (Figure 6) will be organized in different subpages – please see Figure 7 for the template of the OSHub Blueprint subpage:

- **Open Design:** this will include logo-related files, the OSHub furniture blueprints, promotional materials, and other design resources created during the project – Building Open Local Ecosystems: this subpage will include facilitation guidelines for community building, such as co-creation materials and recommendations for project co-design and development with local communities, diversity and equity recommendations, etc.
- **Open Schooling Best-Practices:** here we will publish curated, and peer-reviewed, resources developed by the OSHub.Network partners on Open Schooling. – Open Schooling Projects: this will have information, together with the corresponding open source resources, about the open schooling projects that will be developed in collaboration with the local partners, aimed at tackling the local OSHub challenges and missions.
- **Open Business Models:** this subpage will include the business models and entrepreneurship tools that will be developed during the project together with each local OSHub team.
- **OSHub Deliverables:** in this subpage, we will add all the Deliverables produced throughout the course of the project.

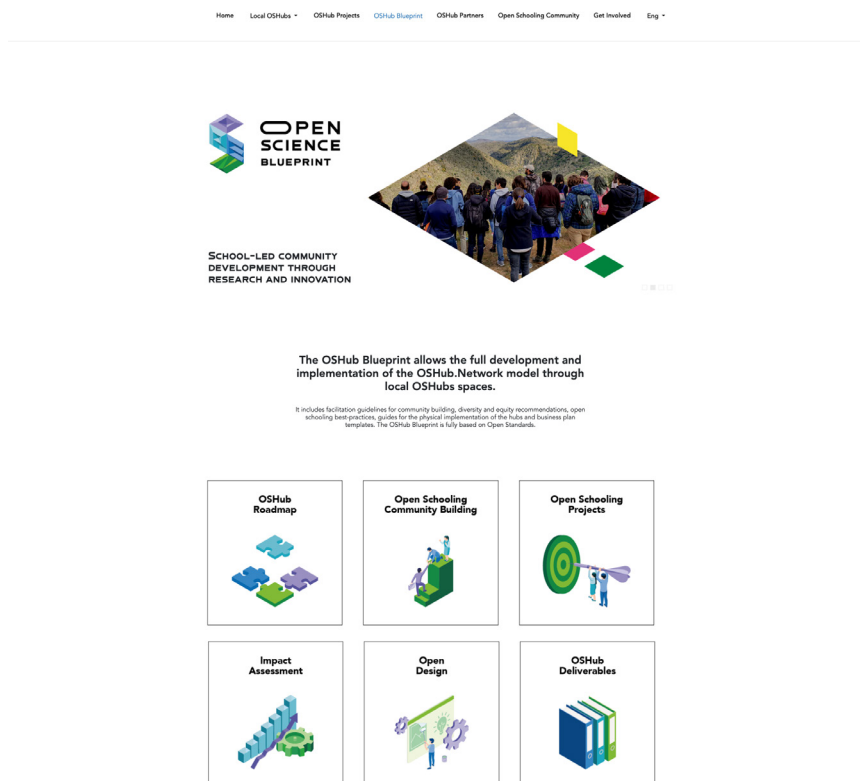
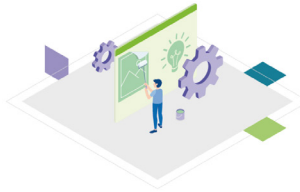


Figure 6: OSHub.Network website “OSHub Blueprint” page



SCHOOL-LED COMMUNITY DEVELOPMENT THROUGH RESEARCH AND INNOVATION


All OSHub Network plans and guidelines are open access and under a Creative Commons License (Attribution-NonCommercial-ShareAlike 4.0 International).

This includes the OSHub Visual Identity elements and the Furniture blueprints of the OSHub spaces, that are made available in the sections below.

VISUAL IDENTITY

The concept underlying the visual identity design is grounded on developing a clear and universal visual language to communicate the basic principles of open science. Importantly, in order to ensure consistency over the identity and legacy of the project, each OSHub selected a national name and created its own logo using the main design elements and respective guidelines.

The visual identity has been designed by **NOSIGNER**



OSHub Guidebook	download
OSHub Logo	download
OSHub Pattern	download
OSHub Font	download

All resources available are under a Creative Commons License Attribution-NonCommercial-ShareAlike 4.0 International (CC BY-NC-SA 4.0)

OPEN FURNITURE

The concept underlying the design and development of the OSHub furniture is based on the principles of circular economy and sustainability.

As such, OSHub Network partnered with **NOSIGNER** and Precious Plastics - particularly **Precious Plastic Portugal** and **Precious Plastic Geneva (GLITTER)** - with the objective of creating products that could be made from recycled materials, namely plastic, and produced locally.

Here we make available the furniture blueprints of what we consider the basic set for furnish an OSHub: stool, table, cabinet and tool board - that anyone can reproduce or adapt.



NOSIGNER



OPO-LIBS



Table Blueprint

[soon](#)

Stool Blueprint

[soon](#)

Cabinet Blueprint

[soon](#)

Tool Board

[soon](#)

Figure 7: OSHub.Network website “OSHub Blueprint” subpage

2.2.4 Projects

Although the Open Schooling Projects developed by the local OSHubs will be part of the OSHub Blueprint (see 2.2.3 OSHub Blueprint), since this will be a pivotal part of the project, the projects will also be featured in the main page.

2.2.5 News

In the “News” page, relevant updates and announcements will be posted monthly. The announcements will be written by OSHub.Network partners and other activity leaders and participants. All relevant publications will also be posted on partners websites.

Each month there will be one partner responsible for producing a publication related to their OSHub or other topics associated with relevant Deliverables or Milestones, to be published in the website.

2.2.6 Partners

The “Partners” page (Figure 8) displays the project partner’s organizations, their geographical location, and the link for the corresponding websites.

Home Local OSHubs ▾ OSHub Projects OSHub Blueprint **OSHub Partners** Open Schooling Community Get Involved Eng ▾



SCHOOL-LED COMMUNITY
DEVELOPMENT THROUGH
RESEARCH AND INNOVATION



□ □ □ □

OSHUB.NETWORK PARTNERS



ADVISORY BOARD

The Advisory Board assists and facilitates the decisions made by the OSHub project partners throughout the duration of the project.

The OSHub Advisory Board is composed of representatives from different society sectors, such as Education, Industry, Academia and Local/Regional Governments.



Annamaria Lisotti

Secondary Maths and Physics Teacher
Italy



Antonin Calderon

Chambre de l'économie sociale et solidaire Après-Ge
Switzerland



Chris Gary

PHERCLOS, eucu.net
Austria



Isabel Damasceno

Centro Regional Coordination and Development Commission (CCDR-C)
Portugal



Joel Chevrier

Université Grenoble Alpes, CRI Paris
France



Linda Hogan

Trinity College Dublin
Ireland



Matteo Merzagora

TRACES and Espace des Sciences
Pierre-Gilles de Gennes, ESPCI Paris - PSL University
France

Figure 8: OSHub.Network website "Partners" page

2.2.7 Get Involved

The “Get Involved” page (Figure 9) provides information on how the different community stakeholders can get involved with the OSHub project, as well as the OSHub.Network contacts.

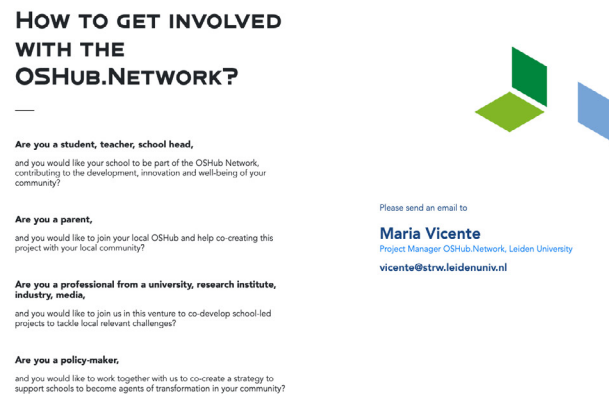


Figure 9: OSHub.Network website “Get Involved” page

3. CONCLUSION

The OSHub.Network Digital Platform aims at sharing the OSHub expertise, resources, and best practices with all OSHubs, their partners and the communities they serve, namely managing, sharing, distributing and disseminating information and news, open resources, open schooling projects of the OSHub.Network project, as well as initiatives and other relevant information for OSHubs and the wider Open Schooling community.

In terms of structure, the OSHub.Network Digital Platform will comprise 7 main pages: Project, Local OSHubs, OSHub Blueprint, News, Projects, OSHub.Network Partners and Get Involved.

In particular, under the Local OSHubs page, there will be a dedicated page for each OSHub, which will contain information about the respective teams, local challenges and open schooling projects (which will also be featured in the main page under „Projects”). In addition, the OSHub Blueprint (fully based on Open Standards) will include facilitation guidelines for community building, diversity and equity recommendations, open schooling best-practices, guides for the physical implementation of the hubs and business plan templates.





**OPEN
SCIENCE
HUB**

**EMPOWERING CITIZENS
THROUGH STEAM
EDUCATION WITH
OPEN SCHOOLING**



DELIVERABLE 6.2
OSHub.Network Digital Platform